



# Roxtec RS Ex seal with SLF RS

Ex rated seal for bolting, for a single cable or pipe.

The Roxtec RS Ex with SLF RS is a seal rated for Ex e and Ex tb areas. It has a metal sleeve and is designed for single cables or pipes. The entry seal has two halves with removable layers making it adaptable to cables and pipes of different sizes. The sleeve is bolted to the structure.



- Rodent resistant
- Quick and easy to install

## Product characteristics



Fire rated



Watertight



Gas-tight



Ex rated

## Structure of installation



Sandwich panel



Metal



Gypsum



Concrete

## Mounting type



Bolting

## Ratings & certificates

### Fire

- A-CLASS according to IMO 2010 FTP Code
- E/EI rating according to EN 13501
- F/T rating according to UL 1479
- H-CLASS according to IMO 2010 FTP Code + HC fire load curve
- Jet fire according to ISO 22899-1 and OTI 95634

### Tightness

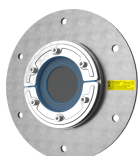
- Gas: 2.67 bar (catastrophic)
- Water: 4 bar (catastrophic)

### Supports

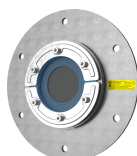
- Ex rated

## Sealing components

### Sealing components



RS B PE Ex kit



RS B ES Ex kit



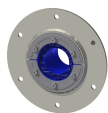
RS B Ex kit

For detailed information, please visit [roxtec.com](https://www.roxtec.com).

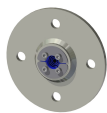


## Pre-configured transit kits

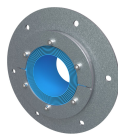
mm/kg



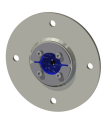
RS 100 B Ex AISI316  
WOC/AISI316



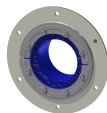
RS 25 B Ex  
AISI316/AISI316



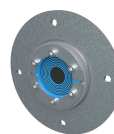
RS 125 B Ex AISI316  
WOC/GALV



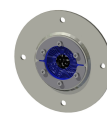
RS 50 B Ex  
AISI316/AISI316



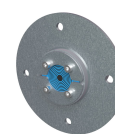
RS 150 B Ex AISI316  
WOC/AISI316



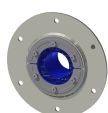
RS 75 B Ex  
AISI316/GALV



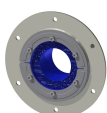
RS 75 B Ex  
AISI316/AISI316



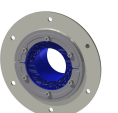
RS 50 B Ex  
AISI316/GALV



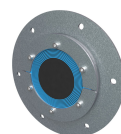
RS 100 B Ex AISI316  
WOC/PRIMED



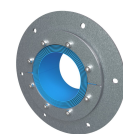
RS 125 B Ex AISI316  
WOC/PRIMED



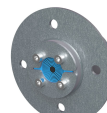
RS 125 B Ex AISI316  
WOC/AISI316



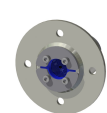
RS 125 B Ex  
AISI316/GALV



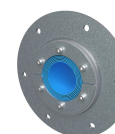
RS 150 B Ex AISI316  
WOC/GALV



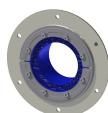
RS 43 B Ex  
AISI316/GALV



RS 43 B Ex  
AISI316/AISI316



RS 100 B Ex AISI316  
WOC/GALV



RS 150 B Ex AISI316  
WOC/PRIMED

Product	Configuration	Aperture dimensions Ø	Weight	Art. no
RS 100 B Ex AISI316 WOC/AISI316	1x (48.0-70.0)	116 - 116	2.7	EXRSB0100102121
RS 25 B Ex AISI316/AISI316	1x (3.6-12.0)		0.48	EXRSB0250002121
RS 125 B Ex AISI316 WOC/GALV		142 - 142	3.6	EXRSB0125102118
RS 50 B Ex AISI316/AISI316	1x (8.0-30.0)	65 - 65	1.4	EXRSB0500002121
RS 150 B Ex AISI316 WOC/AISI316	1x (93.0-119.0)	166 - 166	4.1	EXRSB0150002121
RS 75 B Ex AISI316/GALV		91 - 91	2	EXRSB0750002118
RS 75 B Ex AISI316/AISI316	1x (24.0-54.0)	91 - 91	2.1	EXRSB0750002121
RS 50 B Ex AISI316/GALV		65 - 65	1.4	101918
RS 100 B Ex AISI316 WOC/PRIMED	1x (48.0-70.0)	116 - 116	2.9	EXRSB0100102112
RS 125 B Ex AISI316 WOC/PRIMED	1x (66.0-98.0)	142 - 142	3.4	EXRSB0125102112
RS 125 B Ex AISI316 WOC/AISI316	1x (66.0-98.0)	142 - 142	3.6	EXRSB0125102121
RS 125 B Ex AISI316/GALV		142 - 142	4.3	EXRSB1250002118
RS 125 B Ex AISI316/AISI316		142 - 142	3.9	163616
RS 150 B Ex AISI316 WOC/GALV		166 - 166	4.5	EXRSB0150102118
RS 25 B Ex AISI316/GALV		36 - 36	0.43	EXRSB0250002118
RS 43 B Ex AISI316/GALV		54 - 54	0.9	EXRSB0430002118
RS 43 B Ex AISI316/AISI316	1x (4.0-23.0)	54 - 54	0.9	EXRSB0430002121
RS 100 B Ex AISI316/AISI316		116 - 116	4.4	EXRSB1000002121
RS 100 B Ex AISI316 WOC/GALV		116 - 116	2.9	EXRSB0100102118
RS 100 B Ex AISI316/GALV		116 - 116	3	EXRSB1000002118
RS 150 B Ex AISI316 WOC/PRIMED	1x (93.0-119.0)	166 - 166	4.2	EXRSB0150102112



The product information provided by Roxtec does not release the purchaser of the Roxtec system, or part thereof, from the obligation to independently determine the suitability of the products for the intended process, installation and/or use.

Roxtec gives no guarantee for the Roxtec system or any part thereof and assumes no liability for any loss or damage whatsoever, whether direct, indirect, consequential, loss of profit or otherwise, occurred or caused by the Roxtec systems or installations containing components not manufactured by an authorized manufacturer and/or occurred or caused by the use of the Roxtec system in a manner or for an application other than for which the Roxtec system was designed or intended.

Roxtec expressly excludes any implied warranties of merchantability and fitness for a particular purpose and all other express or implied representations and warranties provided by statute or common law. User determines suitability of the Roxtec system for intended use and assumes all risk and liability in connection therewith. In no event shall Roxtec be liable for indirect, consequential, punitive, special, exemplary or incidental damages or losses.

The Roxtec products are offered and sold in accordance with the conditions of the Roxtec General Terms of Sales. The latest version of the Roxtec General Terms of Sales can be downloaded from <https://www.roxtec.com/en/about-us/about-roxtec/general-terms-of-sales/>

We reserve the right to make changes to the product and technical information without further notice. Any errors in print or entry are no claims for indemnity. The content of this publication is the property of Roxtec International AB and is protected by copyright.

This document was generated on: 2024-04-27